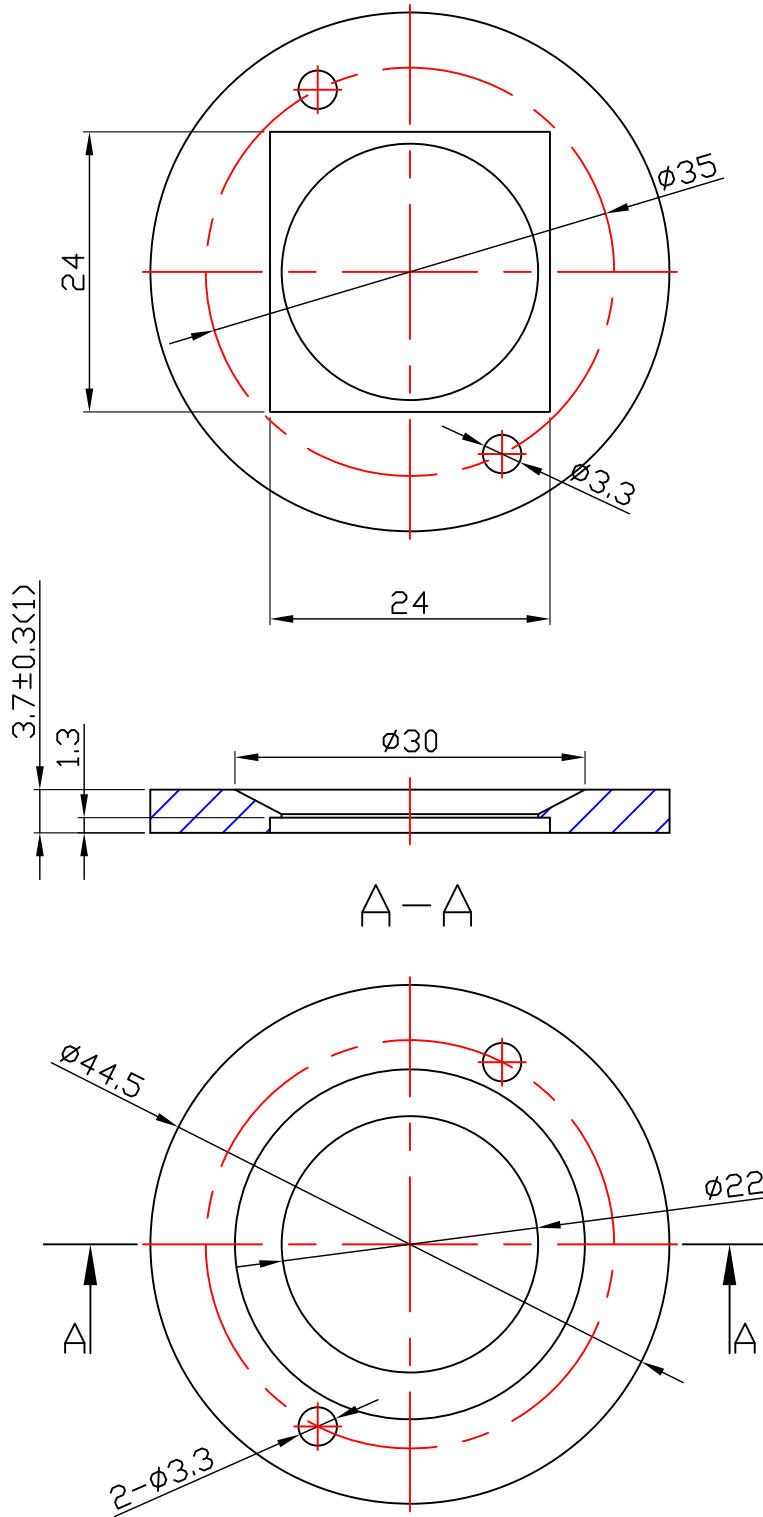


Table for unmentioned tolerance in the drawing (unit: mm)					
0-5	5-30	30-120	120-250	250-400	400-700
±0.15	±0.2	±0.5	±0.8	±1.5	±2



Electric wires:
 $0.32\text{mm}^2 \sim 0.81\text{mm}^2$
 18AWG, 20AWG, 22AWG
 Tin plating after stripping 7mm

					Material:PBT		Nata [®] NATA Lighting Co.,Ltd	
							Customer Item	HOLDER
							Customer Code	NT
							Product Number	99.02.73.167
							Product Name	CXA2520免焊支架 D45xH3.7
Mark	Amended Times	Amended Content			Signature	Amended Date		
Control Version	A0	Design Version	K0		Client Version			
Designer		Drawing by			Proportion	1:1		
Technology		Auditor			View			
Approval		Date	2019.03.28	Page	Total_	Page_		